

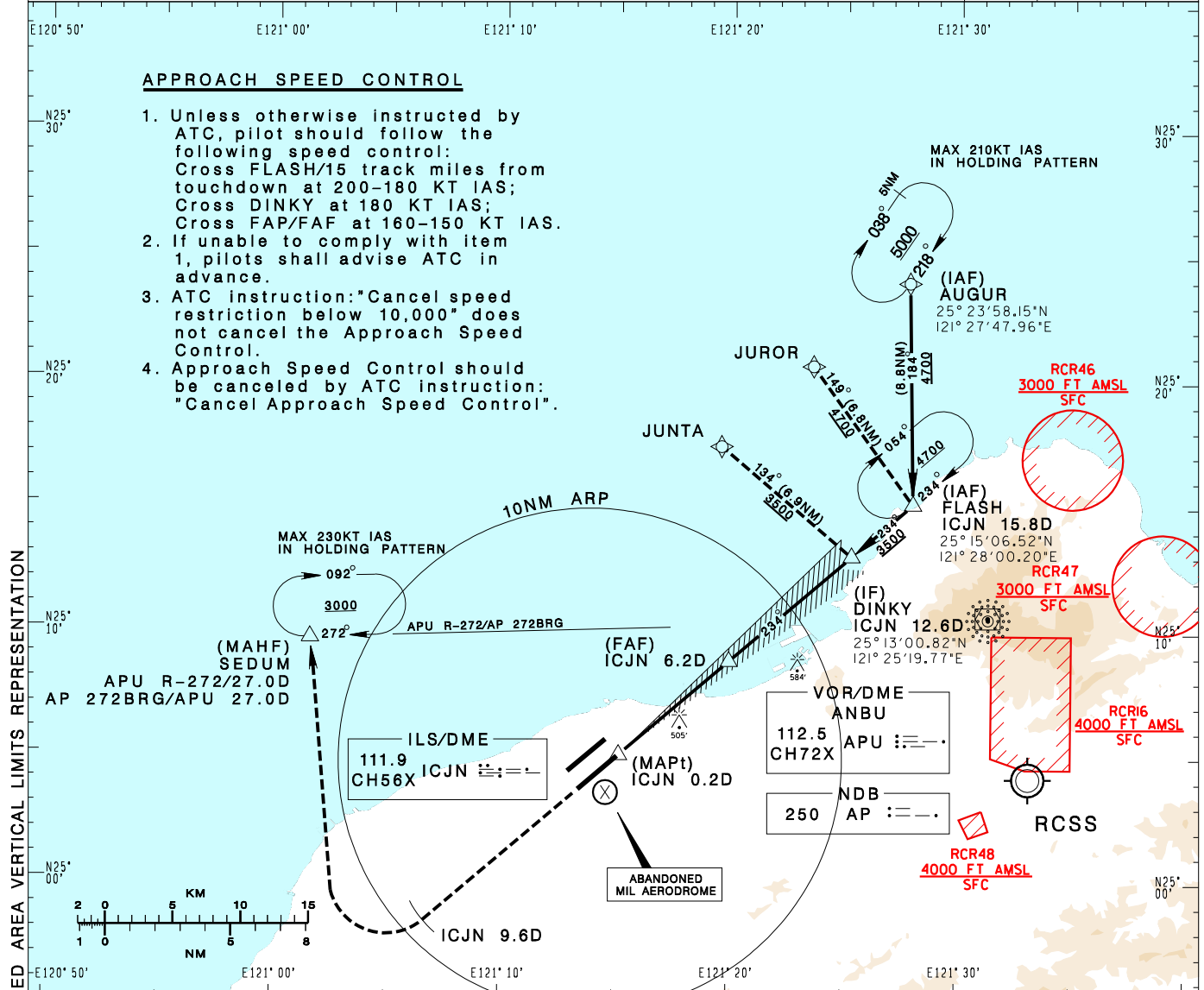
臺灣桃園國際機場
TAIPEI/TAIWAN TAOYUAN INTL AD

RCTP
LOC RWY23L

| | | | | | |
|--|---------------------------|--------------------|--------------|--|--------------------|
| TAIPEI APP 125.1 128.5 125.6 | TAIPEI TWR 118.7 129.3 | ATIS 127.6 | VAR 5° W | | |
| Apt Elev: 108' | Rwy23L DTHR Elev: 96' | Trans Level: FL130 | | | Trans Alt: 11,000' |
| BEARINGS ARE MAGNETIC; DISTANCES ARE NAUTICAL MILES; ELEVATIONS, HEIGHTS IN FEET | | | | | |

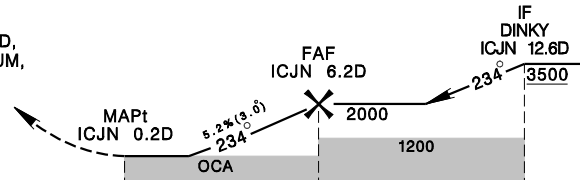
APPROACH SPEED CONTROL

- Unless otherwise instructed by ATC, pilot should follow the following speed control:
Cross FLASH/15 track miles from touchdown at 200-180 KT IAS;
Cross DINKY at 180 KT IAS;
Cross FAP/FAF at 160-150 KT IAS.
- If unable to comply with item 1, pilots shall advise ATC in advance.
- ATC instruction: "Cancel speed restriction below 10,000" does not cancel the Approach Speed Control.
- Approach Speed Control should be canceled by ATC instruction: "Cancel Approach Speed Control".



| | | | | |
|--------------|------|------|------|------|
| DIST to ICJN | 3DME | 4DME | 5DME | 6DME |
| ADVISORY ALT | 1050 | 1370 | 1690 | 2010 |

MISSED APCH:
CLIMB ON HDG 234 UNTIL ICJN 9.6D,
THEN TURN RIGHT DIRECT TO SEDUM,
MAINTAIN 3000 AND HOLD.
*NO TURN PRIOR TO MAPt.



MINIMA (OCA IN FT, VIS IN M, OCH IN FT)

| CATEGORY | A | | B | | C | | D | |
|-----------------------|----------|-----|----------|-----|-----------|-----|-----------|-----|
| STRAIGHT IN | 880/1200 | 784 | 880/1600 | 784 | 880/2900 | 784 | 880/2900 | 784 |
| STRAIGHT IN (ALS OUT) | 880/1600 | 784 | 880/2000 | 784 | 880/3600 | 784 | 880/3600 | 784 |
| CIRCLING | 880/1900 | 772 | 930/2800 | 822 | 1030/4400 | 922 | 1030/4800 | 922 |

NOTE
1. CIRCLING NOT AUTHORIZED
SOUTHEAST OF RWY 05R/23L.
2. ATS SURVEILLANCE REQUIRED
FOR AUGUR TO FLASH AND
MISSED APCH SEGMENTS.
*DME REQUIRED.

CHANGES: NEW PAGE NUMBER, UPDATE RESTRICTED AREA, VERTICAL LIMITS REPRESENTATION